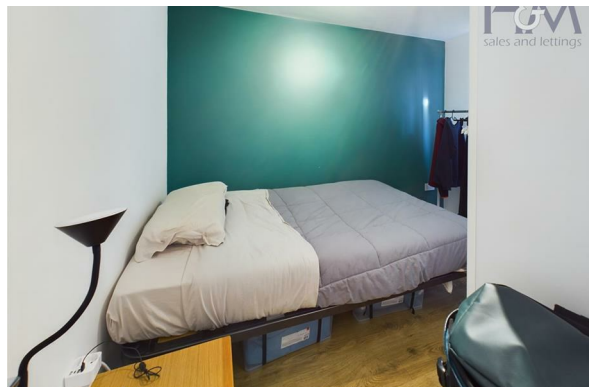


# Rowland Road, Stevenage, SG1 1TE

## £1,050 PCM

**F&M**  
sales and lettings



Homes and Mortgages are delighted to present this one-bedroom ground-floor apartment, conveniently situated within walking distance of Stevenage train station and local amenities. The property features an open-plan living area with a fully equipped kitchen, a four-piece bathroom suite, a comfortable bedroom, a storage cupboard, and a private rear garden with a storage shed. The apartment will be available from the end of December, with viewings starting on Friday the 29th of November.



86 High Street  
Stevenage  
Hertfordshire  
SG1 3DW  
01438 728444

stevenage@homesandmortgages.co.uk

